

## MINNESOTA ARCHITECTURE-HISTORY INVENTORY FORM

Property Location			
<b>Property Name:</b>	R. Welch Building	<b>Inventory No.</b>	ME-LTC-0019
<b>Address:</b>	19 East Depot Street	<b>County:</b>	Meeker
<b>City/Twp:</b>	Litchfield	<b>PIN</b>	27-0826000
<b>T-R-S Quarter:</b>	T119N R31W Sec. 11 SW ¼	<b>Block:</b>	65
<b>USGS Quad</b>	Litchfield North, Minnesota	<b>Lot:</b>	Partial 19 and 20

Property Information			
<b>Architect:</b>	Unknown	<b>Style:</b>	Queen Anne
<b>Date Const:</b>	1906	<b>Historic Context:</b>	Railroad and Agricultural Development 1870-1940
<b>Historic Use:</b>	Commercial	<b>Present Use:</b>	Commercial
<b>Property Type:</b>	Building	<b>Survey Name:</b>	Downtown Historic Resources Resurvey
<b>NR Status:</b>	Contributing	<b>NR Recommendation:</b>	Contributing
<b>Prepared by:</b>	William E. Stark, based on National Register nomination by Susan Granger and Kay Grossman (1996)	<b>Survey Date:</b>	October 2009

### Description:

The R. Welch Building is a small, one-story building faced with reddish-brown brick. It was designed in a commercial version of the Queen Anne style. At the top of the building is an ornate metal cornice with egg and dart molding. There is lettering in the cornice that reads "R. Welch 1906." The three-bay main façade has rounded arched window and center door openings. Above these openings are three rectangular panels of checkerboard brickwork. The window and door openings have been infilled with brick and smaller window units.

### History:

This building housed Litchfield's telephone exchange by 1913. The Litchfield Telephone Company was incorporated in 1898 and was purchased by the Northwestern Telephone Exchange Company (predecessor of Northwestern Bell) in 1917. The telephone office was located here until circa 1956. In 1959, it became the VFW Post, and in 1980 the Bluth Law Office. It has been a tattoo parlor since 2004.

### Evaluation:

This building is a contributing property to the Litchfield Commercial Historic District.

### Integrity: Good

A 1908 photograph shows that the outer two rounded arches each contained a pair of double hung windows with 1/1 sash and a rounded-arched transom, and that the central arch contained a double-leaf doorway beneath a similar transom. Despite these alterations, the building retains good historic integrity, displaying important elements of its original design.

### Condition:

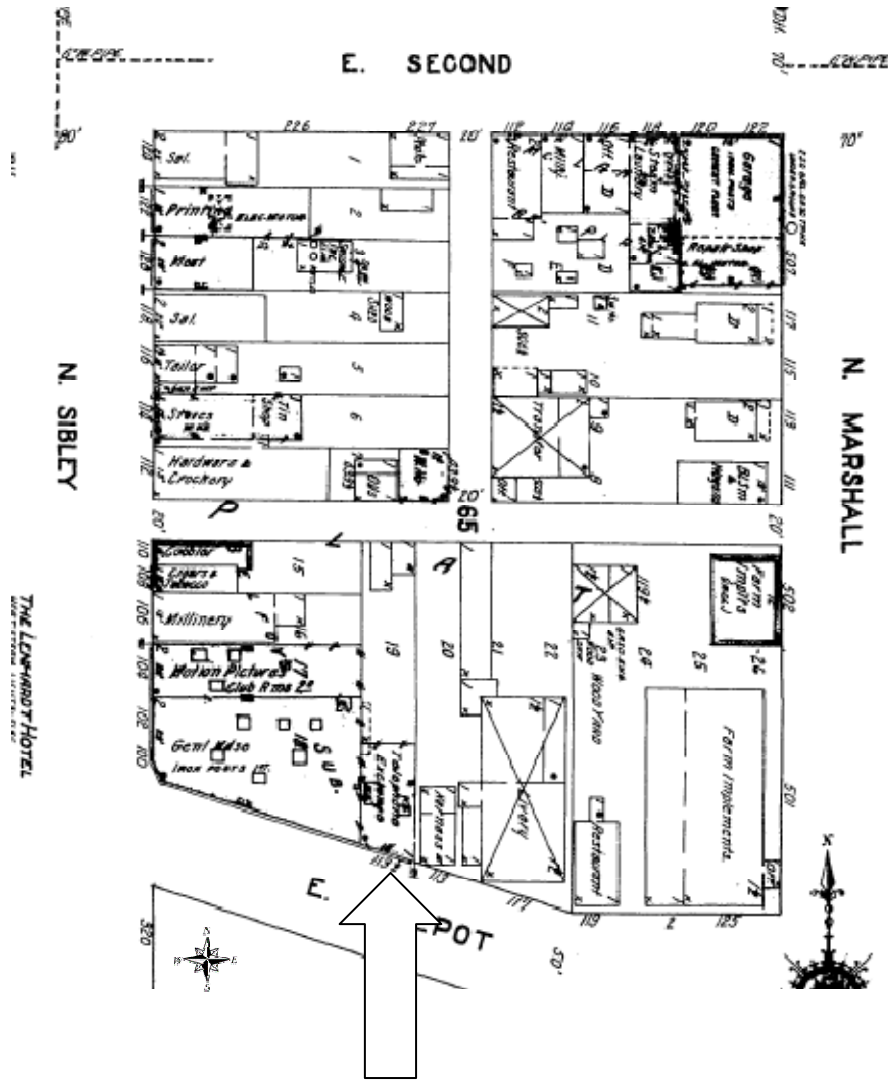
The condition assessment noted that repointing was needed near the top of the façade, and there is some minor deterioration of the stone base. Bowing of the brick pilaster west of the entrance has been addressed by the use of a metal plate to pull it in.



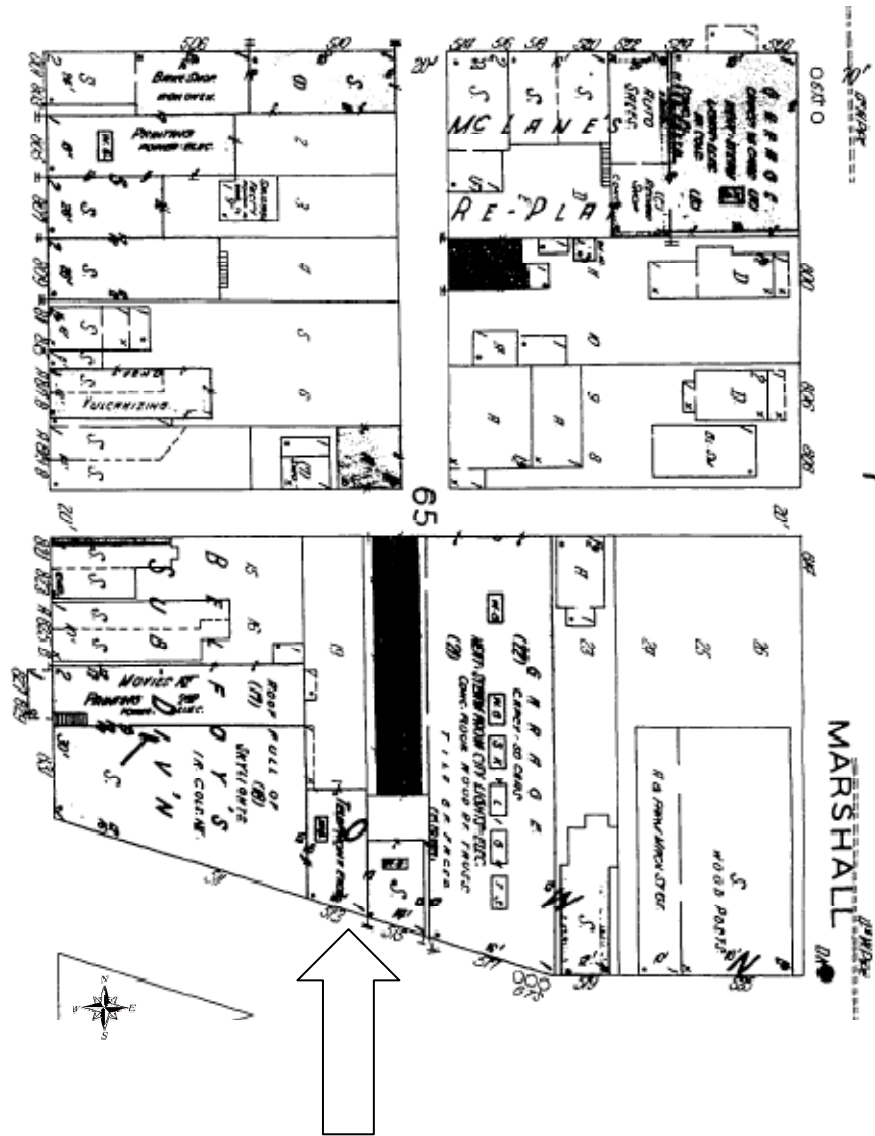
Facing N



Facing S



1913 Sanborn Map



1930 Sanborn Map