

MINNESOTA ARCHITECTURE-HISTORY INVENTORY FORM

Property Location			
Property Name:	Meeker County Offices, Farmers and Merchants Bank	Inventory No.	ME-LTC-0169
Address:	109-113 Sibley Avenue North	County:	Meeker
City/Twp:	Litchfield	PIN	27-0806000; 27-0805000
T-R-S Quarter:	T119N R31W Sec. 11 SW ¼	Block:	64
USGS Quad	Litchfield North, Minnesota	Lot:	Partial 19 to 23

Property Information			
Architect:	Unknown	Style:	Italianate
Date Const:	c. 1882	Historic Context:	Railroad and Agricultural Development 1870-1940
Historic Use:	Commercial	Present Use:	Commercial
Property Type:	Building	Survey Name:	Downtown Historic Resources Resurvey
NR Status:	Contributing	NR Recommendation:	Contributing
Prepared by:	William E. Stark, based on National Register nomination by Susan Granger and Kay Grossman (1996)	Survey Date:	October 2009

Description:

This two-story Italianate style building is faced with cream-colored brick. It has an ornate brick cornice with corbelling and a brick medallion at the center. A brick projection that originally rose from the center of the cornice has been removed. The symmetrical main façade is divided into two halves. Each half has three segmental-arched window openings with brick window hoods and smooth limestone sills. The three southern windows have closed wood shutters; the northern windows have been boarded over. Between the two halves of the façade, the central bay has a rounded arched window, flanked by brick piers. This center bay provides access to the upper story through a ground floor entry. The south elevation and the south half of the rear elevation are faced with cream-colored brick (which has been painted) and have segmental-arched window openings. The northern half of the rear elevation is faced with reddish-brown common brick and also has segmental-arched window openings. The storefronts have been remodeled with new brickwork and display windows, but retain recessed central entrances. There is a one-story rear wood frame and brick addition. Some rear window openings have been filled with grooved wood panels.

History:

Erected circa 1882, this building apparently housed County offices until the Meeker County Courthouse was completed in 1885. In 1887, the southern half was a jewelry and music store, the northern half was a drugstore, and there were offices and a meeting hall on the second floor. By 1896, a printing shop and offices were located above the jewelry and drugstore. A clothing store was located in the southern storefront between at least 1903 and 1930. From circa 1906 to 1932, the Farmers and Merchants Bank (organized in 1906 and closed in 1932) was located in the northern storefront. Hotel rooms for the Lenhardt Hotel, which stood south of this building, were located on the second floor. By 1930 there were shops in both storefronts and on the second level was a photography studio. By 1956 the building was owned by Art L. Tostenrud who operated Viren-Johnson's Clothiers, established in 1906. In recent years, the south building has been used as an antique store and office supply store. After being vacant for several years, the north building was rehabilitated for a restaurant called Cricket Meadow Tea.

Evaluation:

This building is a contributing property to the Litchfield Commercial Historic District.

Integrity: Good

Alterations to this building include changes to both storefronts, probably in the 1930s, which replaced the series of three, tall, arched openings with simple glass and metal framework. The projection on the center parapet was removed in the late 1960s. Second story windows have either been removed, or simply covered by the panels currently in place. Although these changes compromise the integrity of the building, sufficient features remain intact, including the brickwork cornice, original window openings, and the use of separate storefronts.

Condition:

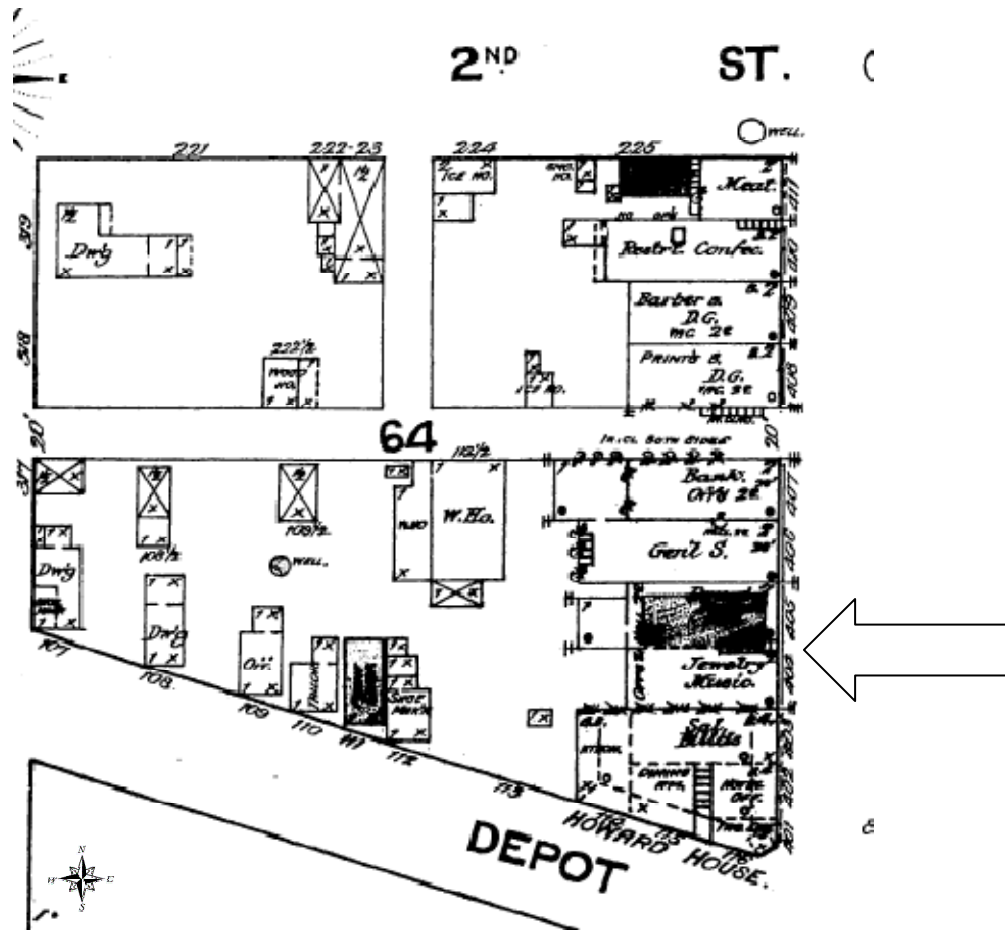
Spalling brick and deterioration due to water damage was observed on the rear wing and should be repaired. The building has been repointed, which has helped to keep the face in good condition.



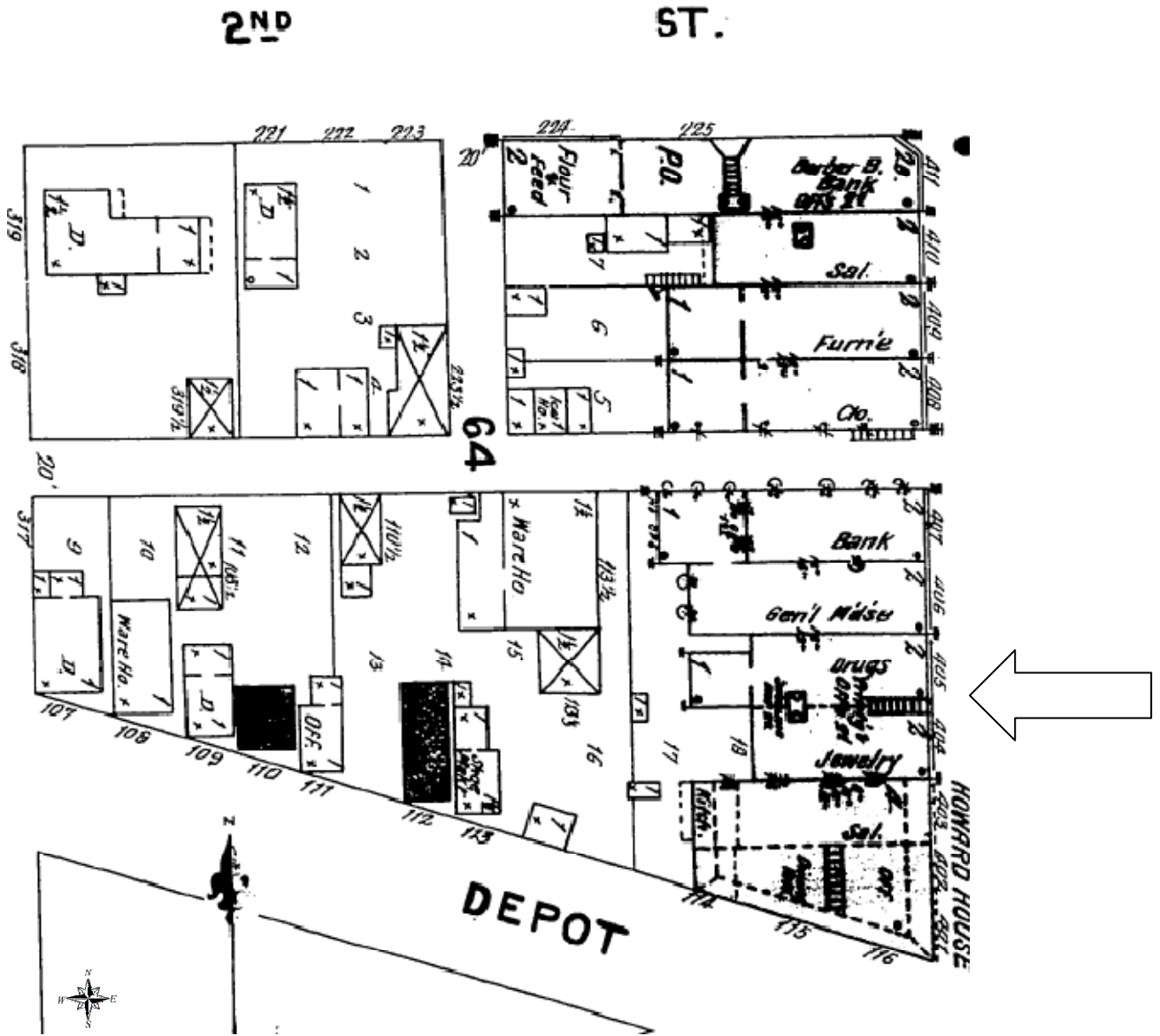
Facing NW



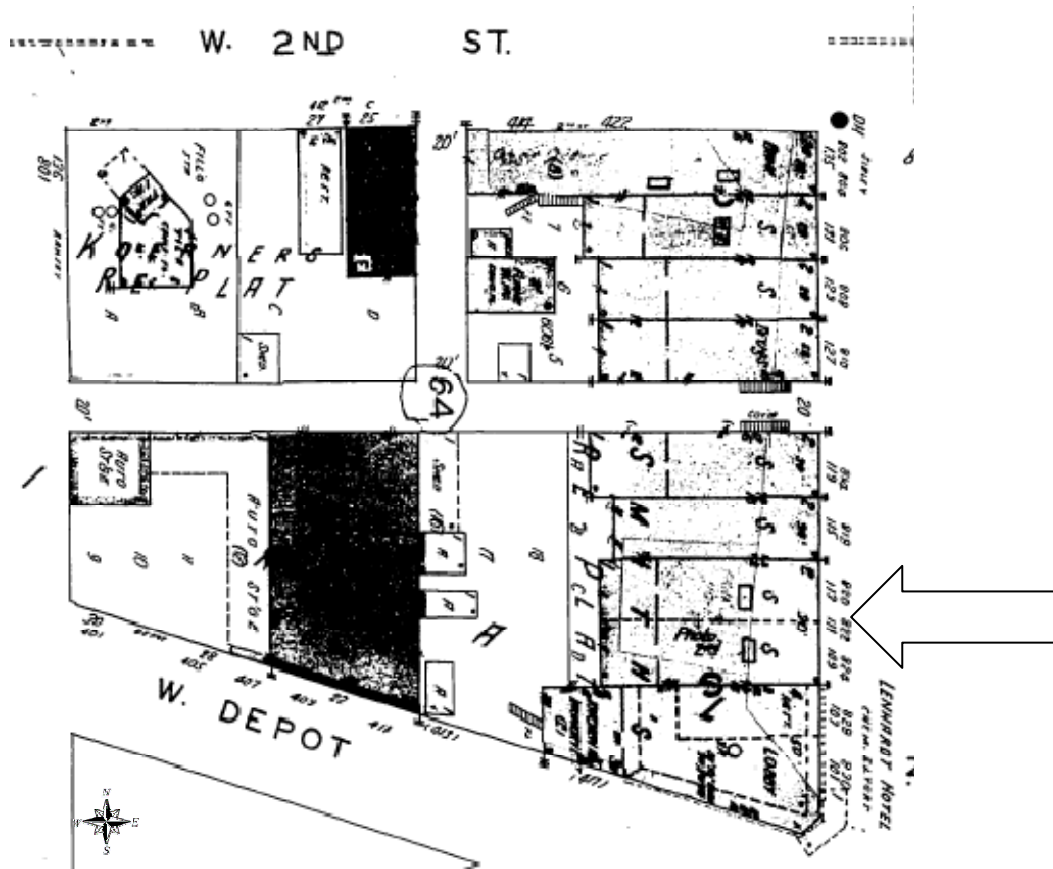
Facing NE



1887 Sanborn Map



1896 Sanborn Map



1941 Sanborn Map