

MINNESOTA ARCHITECTURE-HISTORY INVENTORY FORM

Property Location			
Property Name:	Hanson's Cafe	Inventory No.	ME-LTC-0181
Address:	213 Sibley Avenue North	County:	Meeker
City/Twp:	Litchfield	PIN	27-0747000
T-R-S Quarter:	T119N R31W Sec. 11 SW ¼	Block:	59
USGS Quad	Litchfield North, Minnesota	Lot:	19

Property Information			
Architect:	Unknown	Style:	Commercial
Date Const:	c. 1920	Historic Context:	Railroad and Agricultural Development 1870-1940
Historic Use:	Commercial	Present Use:	Commercial
Property Type:	Building	Survey Name:	Downtown Historic Resources Resurvey
NR Status:	Contributing	NR Recommendation:	Contributing
Prepared by:	William E. Stark, based on National Register nomination by Susan Granger and Kay Grossman (1996)	Survey Date:	October 2009

Description:

This two-story Commercial Style building is very intact with many of the original features and details. The main façade is faced with medium-brown pressed brick which has an unusual speckled glaze. The second story has rectangular window openings with 1/1 sash, and brick sills and soldier course lintels. Recessed rectangular panels in the upper façade set off with stacked header bonds, give relief to the otherwise plain face. The storefront is basically intact with original door, windows, transom and awning. A one-story, stucco-faced wing extends from the rear.

History:

The early years of this building are closely associated with Harry A. Hanson's café, also known as the Diary Shop (1925), and Hanson's Tastee Shop (1935). Hanson also operated the Litchfield Ice Cream Company factory from the rear of the building. In 1933 the Meeker County News was located in the basement. The building served as home for the Meeker County Headquarters War Loans office between 1944 and 1946.

Later occupants were Olson's Hardware (1949), Northern States Power offices (1949), Northwestern Bank (1952), Sederstrom Realty, owned by Victor A. and Vern Sederstrom, and Roy E. Anderson's Accounting and Insurance office. Larry's Barber Shop was established there by 1969, and several other occupants have used the space since then. The property continues to bear signs for Larry's Barber & Style and Roy E. Anderson Public Accountant.

Evaluation:

This building is a contributing property to the Litchfield Commercial Historic District.

Integrity: Excellent

This modest commercial building has strong integrity, with many of the original features and details remaining intact, including its storefront, windows, the canvas awning that can be lowered over the storefront.

Condition:

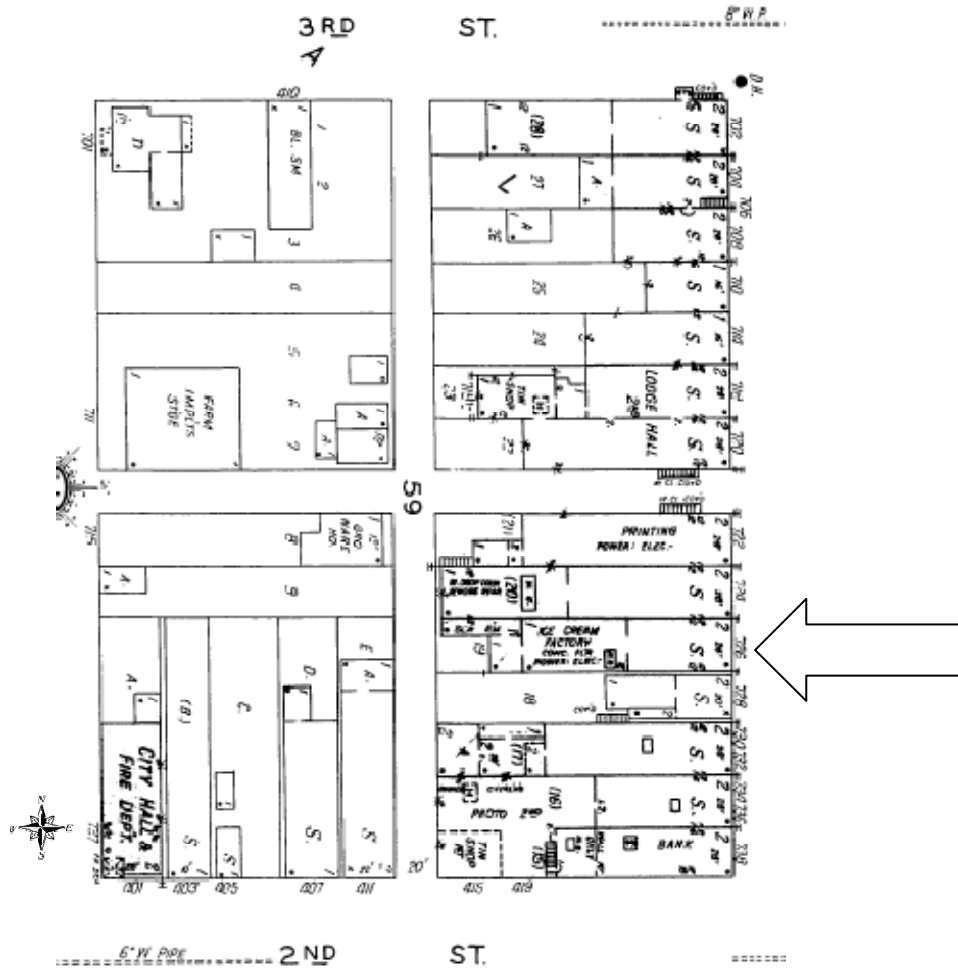
The building remains in good condition. Repairs to wood trim on the storefront is recommended to prevent further deterioration.



Facing W



Facing E



1930 Sanborn Map