

MINNESOTA ARCHITECTURE-HISTORY INVENTORY FORM

Property Location			
Property Name:	I.O.O.F. Hall (northern half)	Inventory No.	ME-LTC-0187
Address:	225 Sibley Avenue North	County:	Meeker
City/Twp:	Litchfield	PIN	27-0752000
T-R-S Quarter:	T119N R31W Sec. 11 SW ¼	Block:	59
USGS Quad	Litchfield North, Minnesota	Lot:	23

Property Information			
Architect:	Unknown	Style:	Italianate
Date Const:	1886	Historic Context:	Railroad and Agricultural Development 1870-1940
Historic Use:	Social Hall/Commercial	Present Use:	Commercial
Property Type:	Building	Survey Name:	Downtown Historic Resources Resurvey
NR Status:	Contributing	NR Recommendation:	Contributing
Prepared by:	William E. Stark, based on National Register nomination by Susan Granger and Kay Grossman (1996)	Survey Date:	October 2009

Description:

This two-story, cream-colored brick Italianate style building has tall, narrow segmental-arched window openings with brick window hoods and smooth limestone sills. It has an ornate, intact pressed metal cornice with finials and a central triangular projection. The northern and rear facades are constructed of the same brick and have segmental-arched window openings. On the rear is a one-story brick wing which is original or an early addition. The storefront has been altered with new display windows, awning and stucco.

History:

The building was constructed in 1886 as part of a double building (with 223 N. Sibley) by Alex Carincross and John Palm for \$14,000. It has housed a variety of businesses, including a millinery run by Mrs. Phelps and Christine Nygren (1887), John Palm's general store (1892), John Birch's clothing store (1909), a saloon, a general store (1912), a pool hall (1931), and grocery store (1933-c.1950). In the second half of the twentieth century, Thomas Furniture (1959) and the Montgomery Wards catalog store (1964) made their homes in the building. Most recently, it has been a series of pizza restaurants.

The International Order of Odd Fellows (I.O.O.F.) Hall was located on the second floors of this building and the one to the south at 223 N. Sibley. By 1913 the lodge hall was known as the Commercial Clubroom. In 1930, the one-story rear wing was a grocery warehouse. A fire broke out in an upstairs apartment in February 2005 caused by an overloaded circuit (*Independent Review* 24 February 2005).

Evaluation:

This building is a contributing property to the Litchfield Commercial Historic District.

Integrity: Good

Despite several alterations, this building retains good historic integrity that serves to illustrate its historic purposes and as an example of the Italianate style applied to a commercial building. Alterations include replaced and resized second-story windows, a modern storefront with stucco-covered walls and awning.

Condition:

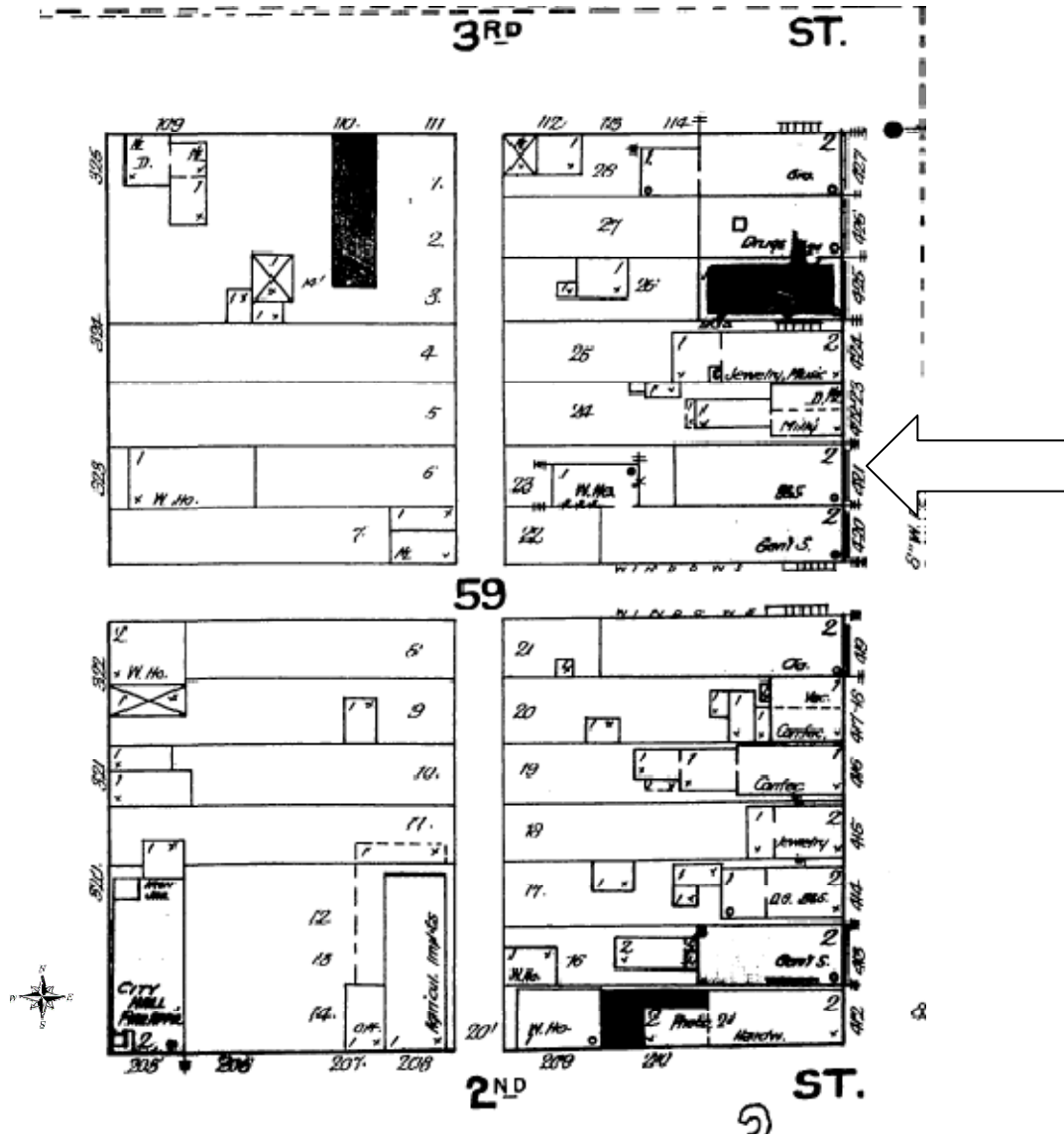
Condition observations include the need for repointing the mortar joints to provide a secure and water-tight surface. Rust on the metal cornice should be cleaned and repainted to deter further rust and preserve this important historic feature.



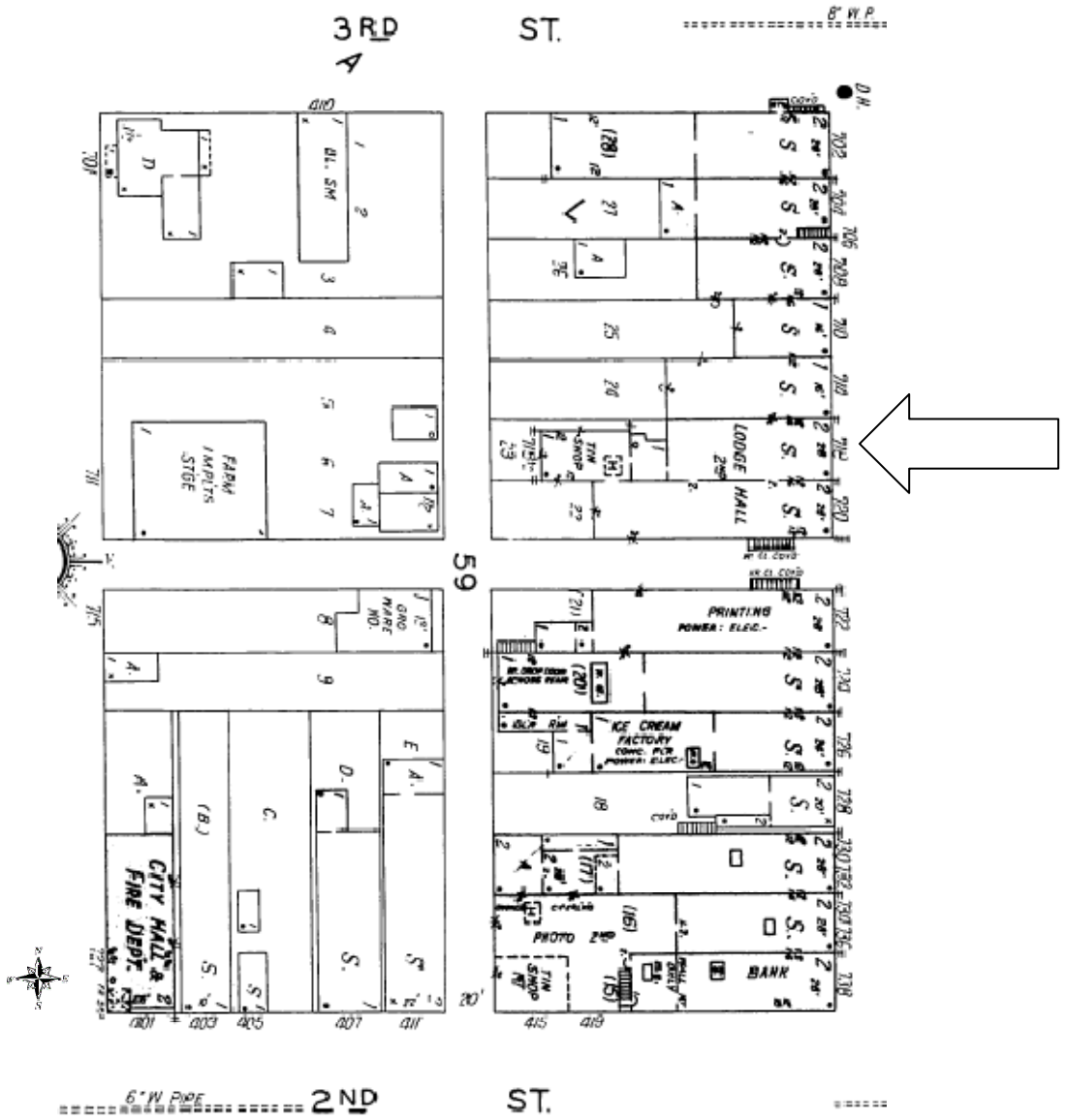
Facing W



Facing SE



1892 Sanborn Map



1930 Sanborn Map