

**Litchfield Heritage Preservation Commission
Historic Commercial District
Property History**

**Parcel Identification Number: 27-0719000
Block: 58 Lot: 3
Current Address: 240 Sibley Avenue North
Non-contributing**

<u>Date</u>	<u>Owner/Name</u>	<u>Use</u>	<u>Comments</u>
1950	Harding Dry Cleaners Harold Harding	Dry cleaners	
1968	Litchfield Cleaners Bob Wannow	Dry cleaners	
1997	Litchfield Cleaners Tom and Kim Evenson	Dry cleaners	

This one story concrete block building was built in 1950. It has a brown brick face and a rear addition. It is a non-contributing building.

Building Data, City of Litchfield Tax Assessor

Land Appraisal

General Desirability: Good

Lot Record:

Topography: Level

Improvements: Sidewalks Curb & Gutter City Water Sanitary Sewer

Street: Asphalt, Alley

Location: Inside lot

Zoning or Use: Commercial 2

Description of Principal Structure:

Building: No. Stories 1 Yr. Built 1950 Sq. Ft. 25' x 70'

Foundation:

Exterior Walls: Brick

Roof: Flat, built up

Interior Finish: Painted interior

Heating:

Wiring: Rigid Conduit

Basement: Full

240 N. Sibley Ave.
Harding Cleaners (now Litchfield Cleaners)
Built 1950
1 Non-contributing Building

1996 Application National
Register of Historic Places

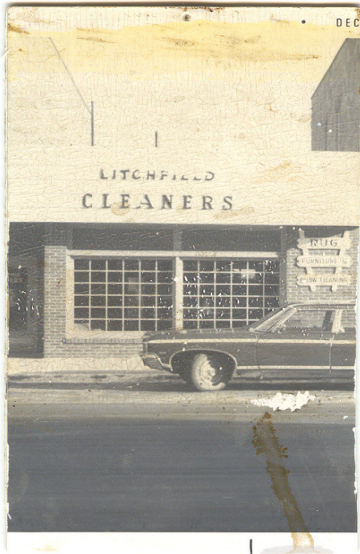
The main facade of this one story concrete block building is faced with brown brick. At the rear is a one story concrete block addition. It was built in 1950 as Harding Cleaners, owned by Harold Harding.

240 N. Sibley Ave.
Harding Cleaners (now Litchfield Cleaners)
Built 1950
1 Non-contributing Building

1996 Application National
Register of Historic Places

The main facade of this one story concrete block building is faced with brown brick. At the rear is a one story concrete block addition. It was built in 1950 as Harding Cleaners, owned by Harold Harding.





Developed Dec. 1973, Meeker County Historical Society P.J. Casey Collection



Facing east
March 2009



Facing west
March 2009